



CLOSED

WILD CHERRY
CXT-6011-7054
SHOWN



OPEN

STANDARD PART NUMBERS AND AVAILABLE COLORS**

FROSTY WHITE CXT-6011-1573	FUSION MAPLE CXT-6011-7909	BANNISTER OAK CXT-6011-7806	FONTHILL PEAR CXT-6011-10745	WILD CHERRY CXT-6011-7054	BRIGHTON WALNUT CXT-6011-7922	OTHER COLORS CALL PROXIMITY CXT-6011-9999

CXT284910T3NNLFNND



SPECIFICATIONS

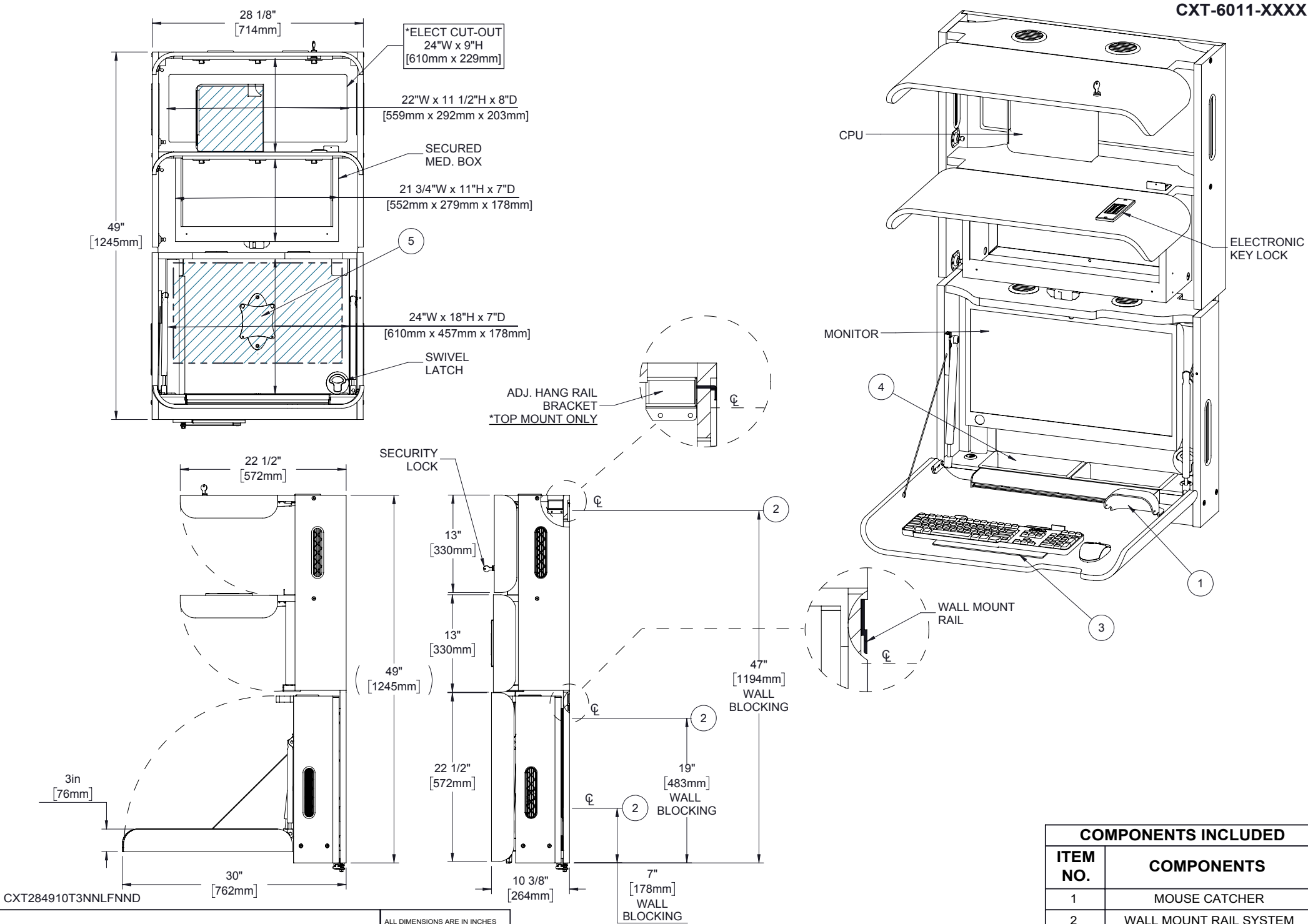
*ASSUMES VESA HOLE PATTERN IS CENTERED ON MONITOR

EQUIPMENT	MAX SIZE DIMENSIONS
CPU	22"W x 11 1/2"H x 8"D
*MONITOR	24"W x 13"H x 3"D
KEYBOARD/MOUSE AREA	22"W x 20"D

ALL DIMENSIONS ARE IN INCHES
UNLESS NOTED OTHERWISE.
DESIGN SUBJECT TO CHANGE
WITH EQUIPMENT SPECIFICATIONS.
ALL INFORMATION ON THIS
DRAWING IS PROPRIETARY AND
MAY NOT BE USED WITHOUT
PERMISSION FROM PROXIMITY
SYSTEMS, INC. © 2016.

OPTIONAL ACCESSORIES/PART NO. (NOT INCLUDED)

1. SLOPED CABINET TOP: AC-CTOP-10-XXXX
2. COVER FOR RECESSED STORAGE: AC-CNTR-CVR
3. LED LIGHT: AC-LED-LGHT



ALL DIMENSIONS ARE IN INCHES
UNLESS NOTED OTHERWISE.
DESIGN SUBJECT TO CHANGE
WITH EQUIPMENT SPECIFICATIONS.
ALL INFORMATION ON THIS
DRAWING IS PROPRIETARY AND
MAY NOT BE USED WITHOUT
PERMISSION FROM PROXIMITY
SYSTEMS, INC. © 2016.

COMPONENTS INCLUDED	
ITEM NO.	COMPONENTS
1	MOUSE CATCHER
2	WALL MOUNT RAIL SYSTEM
3	KEYBOARD TRAY
4	RECESSED STORAGE
5	MONITOR TILT MOUNT
R: A	SHEET 2 OF 2