



**CLOSED**



**OPEN**

**AVAILABLE COLORS**

FROSTY WHITE 1573-60	FUSION MAPLE 7909-60	BANNISTER OAK 7806-60	FONTHILL PEAR 10745-60	WILD CHERRY 7054-60	BRIGHTON WALNUT 7922-60
----------------------------	----------------------------	-----------------------------	------------------------------	---------------------------	-------------------------------

\*WILD CHERRY  
SHOWN

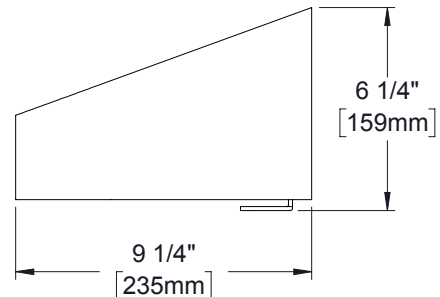
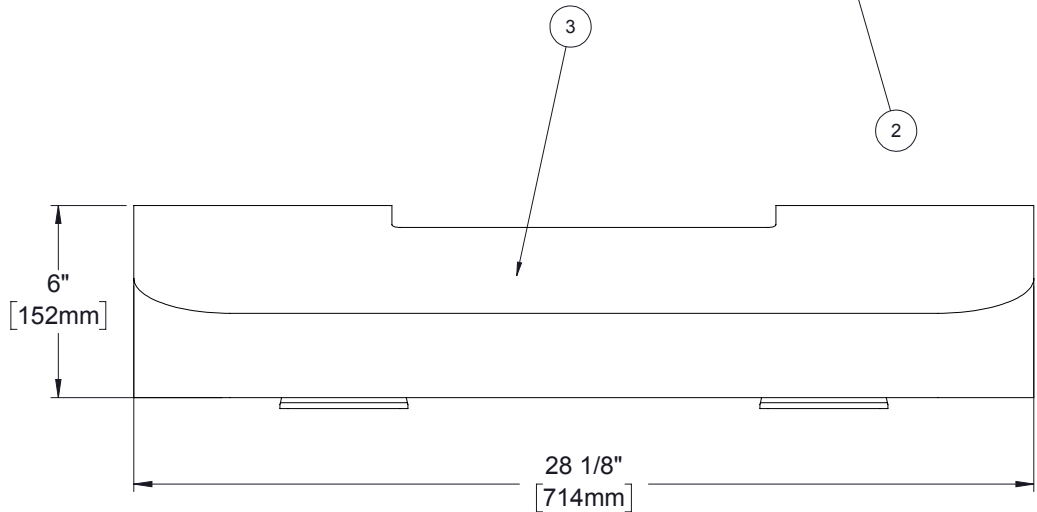
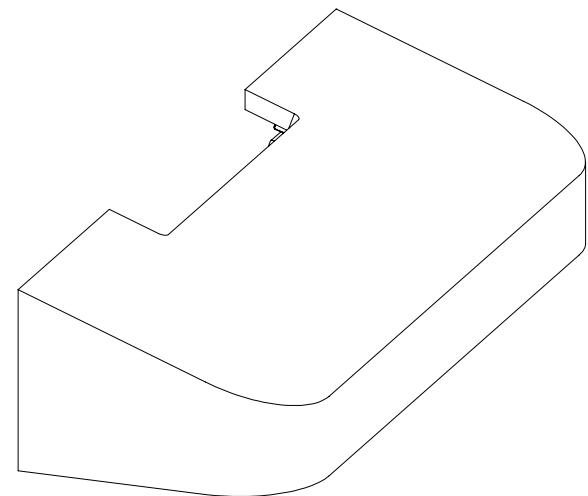
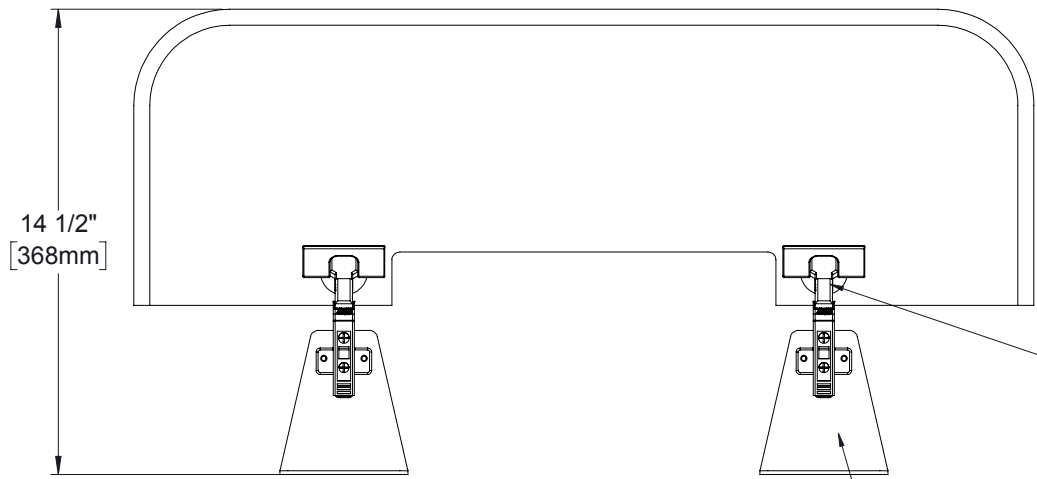


**PROXIMITY**<sup>®</sup>

ALL DIMENSIONS ARE IN INCHES  
UNLESS NOTED OTHERWISE.  
DESIGN SUBJECT TO CHANGE  
WITH EQUIPMENT SPECIFICATIONS.  
ALL INFORMATION ON THIS  
DRAWING IS PROPRIETARY AND  
MAY NOT BE USED WITHOUT  
PERMISSION FROM PROXIMITY  
SYSTEMS, INC. © 2016.

DRW BY: ZG
DRW DATE: SEP-27-2016
REV BY:
REV DATE:
REV: A

<b>PART NAME: 9" SLOPED CABINET TOP</b>
<b>PART NO: AC-CTOP-9-XXXX</b>
<b>DESCRIPTION: TOP FOR 9" CXT WORK STATION</b>



**PROXIMITY**<sup>®</sup>

ALL DIMENSIONS ARE IN INCHES UNLESS NOTED OTHERWISE. DESIGN SUBJECT TO CHANGE WITH EQUIPMENT SPECIFICATIONS. ALL INFORMATION ON THIS DRAWING IS PROPRIETARY AND MAY NOT BE USED WITHOUT PERMISSION FROM PROXIMITY SYSTEMS, INC. © 2016.

DRW BY: ZG  
 DRW DATE: SEP-27-2016  
 REV BY:  
 REV DATE:  
 REV: A

**COMPONENTS INCLUDED**

ITEM NO.	COMPONENTS
1	HINGES
2	SUPPORT BRACKET
3	TOP
4	N/A
5	N/A