



CLOSED

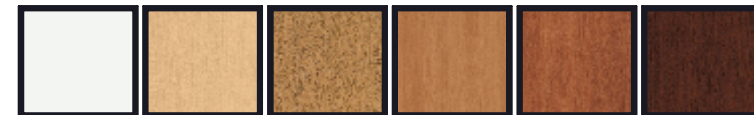


OPEN

AVAILABLE COLORS

FROSTY WHITE 1573-60	FUSION MAPLE 7909-60	BANNISTER OAK 7806-60	FONTHILL PEAR 10745-60	WILD CHERRY 7054-60	BRIGHTON WALNUT 7922-60
----------------------------	----------------------------	-----------------------------	------------------------------	---------------------------	-------------------------------

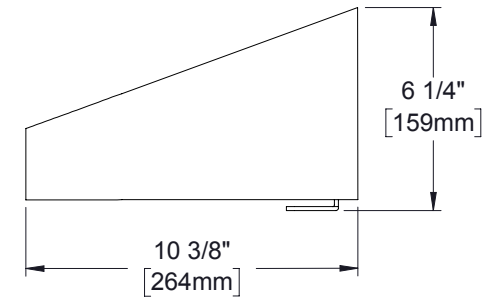
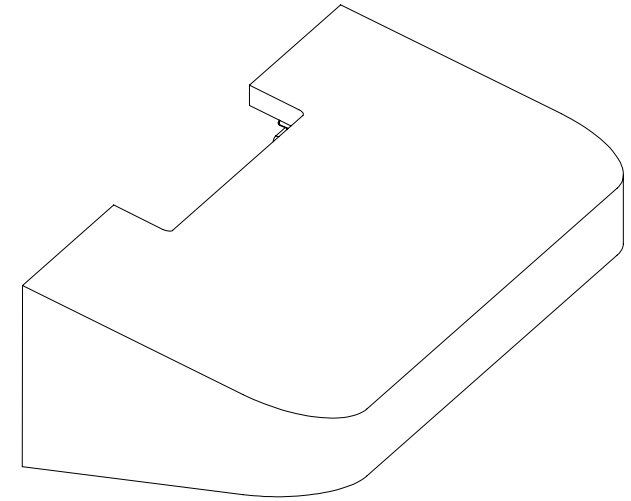
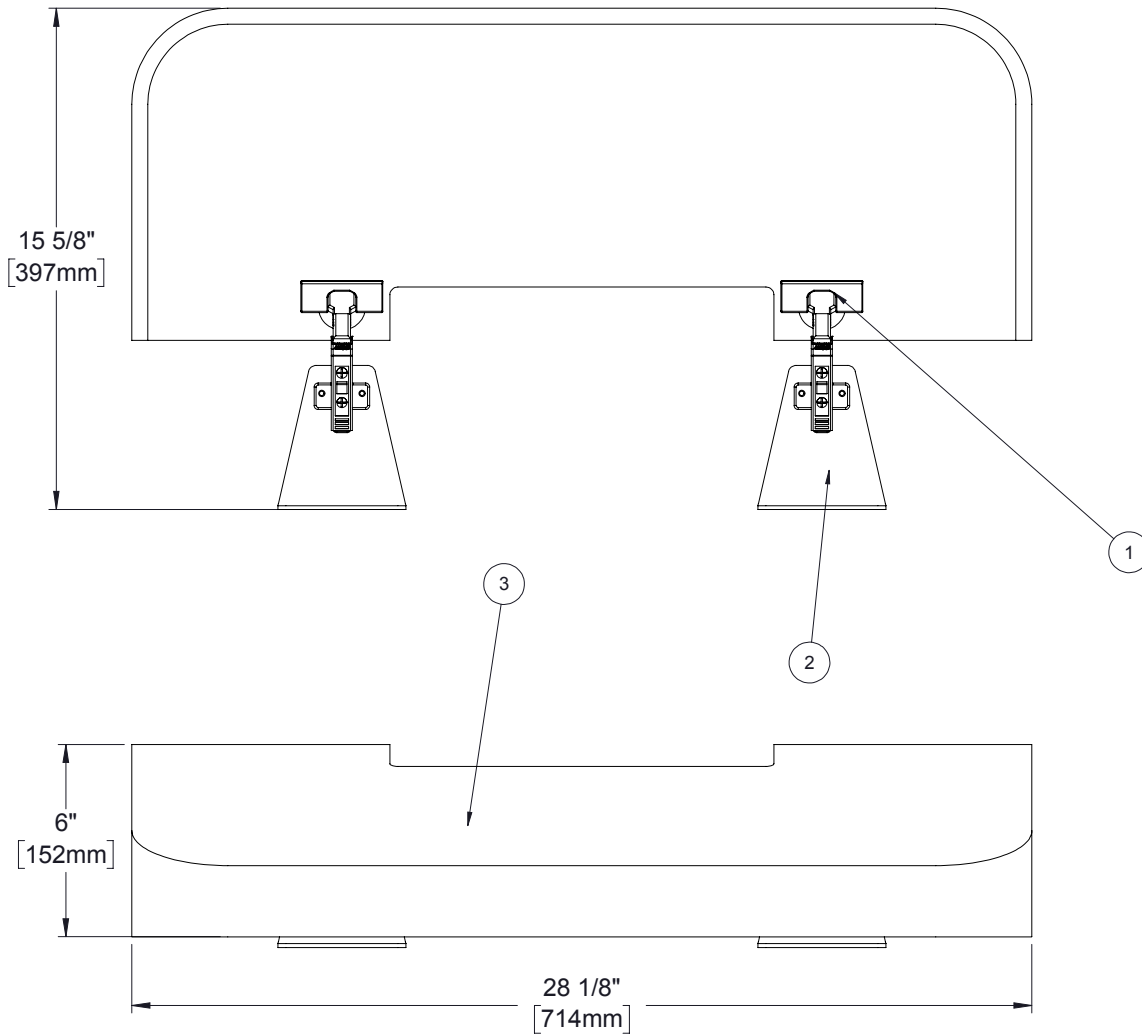
*WILD CHERRY
SHOWN



PROXIMITY

ALL DIMENSIONS ARE IN INCHES
UNLESS NOTED OTHERWISE.
DESIGN SUBJECT TO CHANGE
WITH EQUIPMENT SPECIFICATIONS.
ALL INFORMATION ON THIS
DRAWING IS PROPRIETARY AND
MAY NOT BE USED WITHOUT
PERMISSION FROM PROXIMITY
SYSTEMS, INC. © 2016.

DRW BY: ZG	PART NAME: 10" SLOPPED CABINET TOP
DRW DATE: SEP-27-2016	PART NO: AC-CTOP-10-XXXX
REV BY:	DESCRIPTION: TOP FOR 9" CXT SVL
REV DATE:	WORK STATION
REV: A	



PROXIMITY®

ALL DIMENSIONS ARE IN INCHES
UNLESS NOTED OTHERWISE.
DESIGN SUBJECT TO CHANGE
WITH EQUIPMENT SPECIFICATIONS.
ALL INFORMATION ON THIS
DRAWING IS PROPRIETARY AND
MAY NOT BE USED WITHOUT
PERMISSION FROM PROXIMITY
SYSTEMS, INC. © 2016.

DRW BY: ZG
DRW DATE: SEP-27-2016
REV BY:
REV DATE:
REV: A

COMPONENTS INCLUDED	
ITEM NO.	COMPONENTS
1	HINGES
2	SUPPORT BRACKET
3	TOP
4	N/A
5	N/A